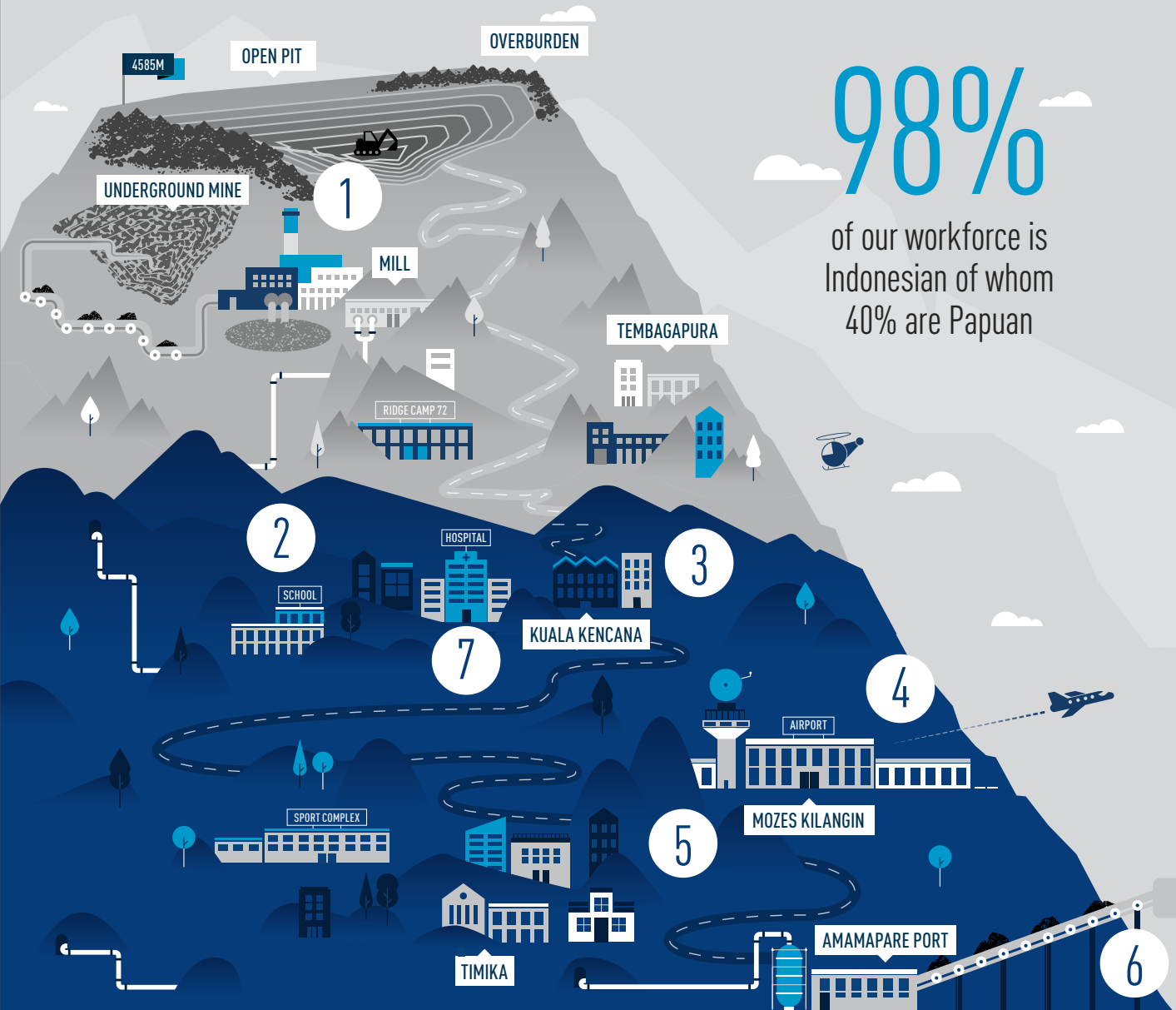


FREEPORT INDONESIA: OUR ECONOMIC AND SOCIAL CONTRIBUTION AS OF Q4 2021



98%

of our workforce is Indonesian of whom 40% are Papuan

- 1 210k jobs have been created as a result of our operations; In 2020, 98% of the workforce is Indonesian
- 2 12,000 scholarships have been awarded since 1996 through a partnership with The Amungme and Kamoro Community Empowerment Foundation (YPMK)
- 3 4,100 trained apprentices through the Nemangkawi Institute since inception and 91% are Papuan
- 4 3,200 homes built, as well as four schools, one hospital and five health clinics, one world-class sports complex, one mine training institute, one airport and two airstrips
- 5 \$860m USD in contributions since 1996; PTFI contributes 1% of annual revenue to the YPMK which is \$36m USD in 2020
- 6 100% of revenue generated by PTFI over the past two years has been reinvested in operations in Indonesia
- 7 5 clinics and 1 hospital built and operated with free healthcare services for members from the seven tribes. More than 96,000 patient visits were recorded throughout 2020